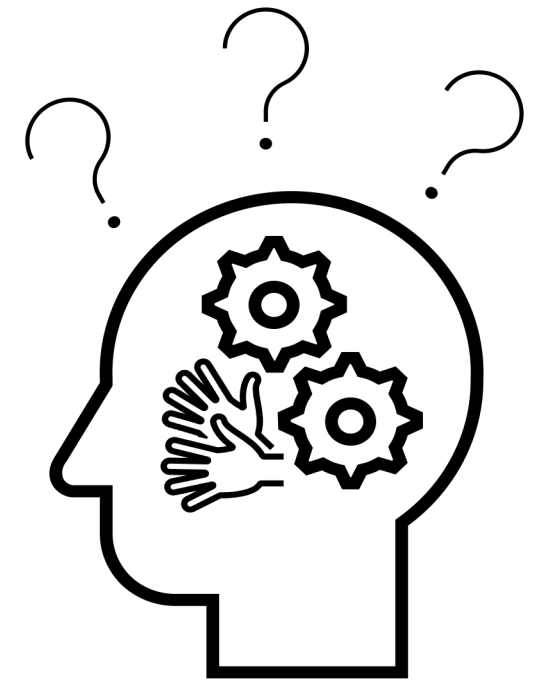




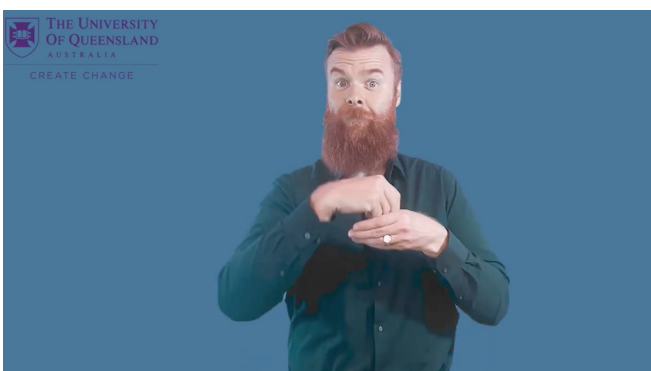
Can you help with cognitive research for older Deaf people?



Are you:

- Deaf and use Auslan?
- 50 years or older?
- Memory is okay?

Watch this video for full information:



<https://youtu.be/TuoHaMtnrow>

Please register:



<https://forms.office.com/r/bh38SdTYbp>

OR

Contact Dr Frances Dark
Deafness_MHS@health.qld.gov.au