



Welcome to the Deaf Herald.

If you have any feedback, please let us know by emailing us at

info@deafconnect.org.au.

Enjoy this month's edition!

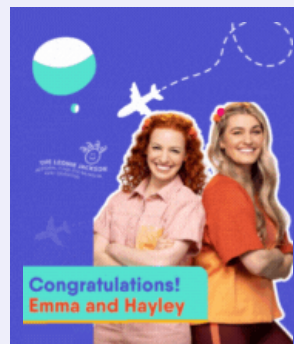


[Deaf Connect Annual General Meeting](#)

This year our AGM will be hosted at our Adelaide office this Saturday, with screenings in Brisbane, Sydney and Perth.

It will be Auslan interpreted and live captioned, with light food and refreshments available for those attending in person. Learn how to RSVP.

[Learn more](#)



[Emma and Hayley tie for Amazing Race win!](#)

The Deaf Connect team, and the community has been very excited to witness Emma and Hayley's resounding success in "The Amazing Race" recently. Their prize is being donated to the Leonie Jackson Memorial Fund.

Our dedicated staff has been eagerly tuning in for the past few weeks, following their adventures.

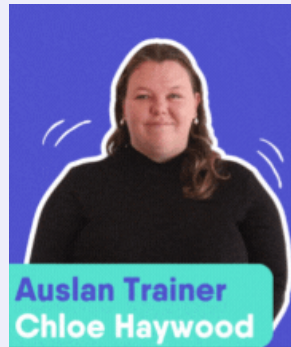
[Learn more](#)



[Have you seen our Kings Park office?](#)

Deaf Connect are excited to announce that we are moving to a new office in Perth, Western Australia, at 44A Kings Park! While the office is still undergoing refurbishment and is not yet open to the public, you can watch the video to see a virtual tour of the new office space! We will be sure to let you know when it is ready for visitors, so look out for updates on our channels!

[Learn more](#)



[Meet Chloe | Deaf Connect Auslan Trainer](#)

Meet Chloe, an enthusiastic Auslan Trainer at Deaf Connect, teaching students on their very first steps in their Auslan learning journeys. We had the chance to delve into Chloe's journey and discover how teaching is not just a profession, it is a passion of hers.

If you think a career as an Auslan Trainer is right for you, you can apply now by visiting our [careers page](#).

[Learn more](#)

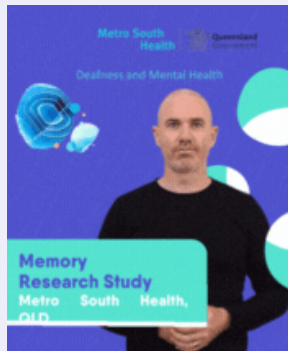


[Preventing Falls](#)

As we grow older, our bodies change, affecting our balance, coordination, and physical strength. Falls are unfortunately common among seniors and can result in severe injuries and a loss of independence. However, by acting now, we can significantly reduce the risk of falls and create a safer environment for ourselves and our loved ones.

We've created a blog that includes helpful tips to keep you safe and prevent trips and falls.

[Learn more](#)



[Mind and memory research for Deaf seniors](#)

If you are Deaf and over 50 years of age, The Deafness and Mental Health Service are calling on participants to take part in a study on memory to help produce a culturally validated tool to test memory for the community in the future. Watch the video to see if you would like to register your interest in a memory test.

[Learn More](#)



Deaf Awareness Training

Deaf Connect's customised Deaf Awareness Training (DAT) provides students and organisations with information and practical tips to improve your interactions with deaf people. The training is available, face-to-face or online self-paced.

[Learn more](#)

Serving our **community**.
Sharing our **culture**.



No longer want to receive these emails?

[Unsubscribe](#) . Deaf Connect 915 Ipswich Road Moorooka, QLD

4105